



## Release Notes

**Product Name:** ProRAE Studio II  
**Version:** V1.10.1  
**Operating System:** Windows 7(x86 and x64), Windows 8(x86 and x64)  
**Release Date:** April 4<sup>th</sup>, 2016

All users should update their existing ProRAE Studio II to v1.10.1. Latest version of the ProRAE Studio II can be downloaded from our website.

### What's New

This release contains the following enhancements:

1. **Backward compatibility of configuration files for the following products:**
  - ToxiRAE Pro Series
  - MultiRAE Series
  - QRAE 3
  - AutoRAE2

### Installation and Update Notes

#### Before installation

Close all other programs before installation.

#### Installation

1. Load ProRAE Studio II software from the CD, or double-click **ProRAE\_Studio\_II\_V1.10.1\_Web.exe**, if you have downloaded the software from the RAE Systems by Honeywell website (<http://www.raesystems.com/customer-care/software-updates/prorae-studio-ii>).
2. Follow the instructions for installation.
3. Once the software is successfully installed, a “**success**” window appears. Click “**Finish**” to exit the installation program.

### Supported Instruments

- AutoRAE 2 Controller(DKS-6000) V1.24
- AutoRAE 2 Handheld PID Cradle(DKS-6004) V1.30
- GammaRAE II R V4.00
- MiniRAE 3000 V2.20
- MultiRAE Benzene (PGM-6228) V1.40
- MiniRAE Lite V2.20
- MiniRAE Lite(ATEX) V1.05B
- MiniRAE Lite (Fumigation) V1.07



- MultiRAE (Pumped) Cradle(DKS-6001) V1.30
- MicroRAE (PGM-2600) V1.00
- MultiRAE (PGM-6220) V1.40
- MultiRAE (PGM-6226) V1.40
- MultiRAE (PGM-6228) V1.40
- MultiRAE Lite (PGM-6200) V1.40
- MultiRAE Lite (PGM-6200D) V1.40
- MultiRAE Lite (PGM-6206) V1.40
- MultiRAE Lite (PGM-6206D) V1.40
- MultiRAE Lite (PGM-6208) V1.40
- MultiRAE Lite (PGM-6208) V1.36 (WiFi Model)
- MultiRAE Lite (PGM-6208D) V1.40
- MultiRAE Lite (PGM-6208D) V1.36 (WiFi Model)
- MultiRAE MX (PGM-6260) V1.14X
- MultiRAE MX (PGM-6262) V1.14X
- MultiRAE MX (PGM-6265) V1.14X
- MultiRAE MX (PGM-6268) V1.14X
- MultiRAE MX (PGM-6268D) V1.14X
- MultiRAE Pro (PGM-6240) V1.40
- MultiRAE Pro (PGM-6246) V1.40
- MultiRAE Pro (PGM-6248) V1.40
- NeutronRAE II (PRM-3020) V2.00
- NeutronRAE II (PRM-3021) V3.01
- ppbRAE 3000 V1.20
- QRAE II V3.50
- QRAE 3 Cradle (DKS-6003) V1.22
- QRAE 3 (PGM-2500) V2.02
- QRAE 3 (PGM-2500D) V2.02
- QRAE 3 (PGM-2510) V2.02
- QRAE 3 (PGM-2510D) V2.02
- QRAE 3 (PGM-2520) V2.02
- QRAE 3 (PGM-2520D) V2.02
- QRAE 3 (PGM-2530) V2.02
- QRAE 3 (PGM-2530D) V2.02
- QRAE 3 (PGM-2560) V2.02
- QRAE 3 (PGM-2560D) V2.02
- ToxiRAE Pro Cradle (DKS-6001) V1.22
- ToxiRAE Pro LEL V1.66
- ToxiRAE Pro PID V1.66
- ToxiRAE Pro V1.66
- UltraRAE 3000 V2.20



## Previous Versions

### ProRAE Studio II v1.10.0

This release contains the following enhancements:

1. Supports MicroRAE and AutoRAE 2 Handheld PID Cradle with ppbRAE 3000, MiniRAE 3000, UltraRAE 3000, MiniRAE Lite and MiniRAE Lite ATEX.
2. Allows transferring device data from ProRAE Studio II to Remote ProRAE Guardian.

### ProRAE Studio II v1.9.1

This release contains the following enhancements:

1. Supports KM LEL sensor for QRAE 3.
2. Allows setting of QRAE 3 sensor serial number to track sensor production date.
3. Allows software to connect to the Internet using proxy server.

### ProRAE Studio II v1.9.0

#### What's New

This release contains the following enhancements:

1. Supports MultiRAE MX.
2. New ProRAE Update for checking firmware updates.
3. Custom region setting for wireless modules.
4. Supports strong password policy.
5. Allows secure password reset.

### ProRAE Studio II v1.8.1

#### What's New

This release contains the following enhancements:

1. Support QRAE 3 and AutoRAE 2 Cradle for QRAE 3.
2. Set up instrument and download data log through AutoRAE 2 system.
3. Upload instrument's firmware to AutoRAE 2 system for updating.
4. Support ETO calibration/bump gas.



## ProRAE Studio II v1.8.0

### What's New

This release contains the following enhancements:

1. ProRAE Update, a new software utility for automatically checking updates for RAE Systems software products and providing features for easy download.
2. Features to seamlessly register instruments with RAE Systems and ensure better support.
3. Fixes for customer-reported issues. Refer to the "Issues Fixed" section for details.

### Issues Fixed

ID	Description
PRSII-225	ProRAE Studio II shows the Man Down Alarm settings enabled for ToxiRAE Pro, which does not support the option.
PRSII-228	ProRAE Studio II cannot open MiniRAE Lite ATEX V1.20.
PRSII-234	ProRAE Studio II should be able to set at "0" to clear the gas configuration.

## ProRAE Studio II v1.7.0

### What's New

This release contains the following enhancements:

1. ToxiRAE Pro cradle support.
2. Datalog support for MiniRAE Lite.
3. Turkish language support for MultiRAE2 family.
4. Many improvements in print function support.

### Issues Fixed

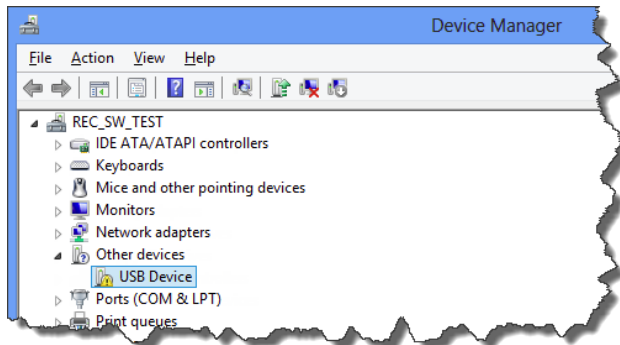
ID	Description
PRSII-179	ProRAE Studio II does not show a confirmation message after successfully uploading firmware to AutoRAE 2.
PRSII-197	ProRAE Studio II fails to set a gas lot number with Chinese-language character set.
PRSII-199	ProRAE Studio II allows setting of span 1 value to 1000 ppm for 9.8eV and 10.6eV lamps in MiniRAE 3000, which leads to erroneous readings.
PRSII-207	ProRAE Studio II fails without showing any message when the user tries to upload a configuration file with a sensor list that does not match the instrument's sensor list.

### Known Issue(s) and Workaround(s)

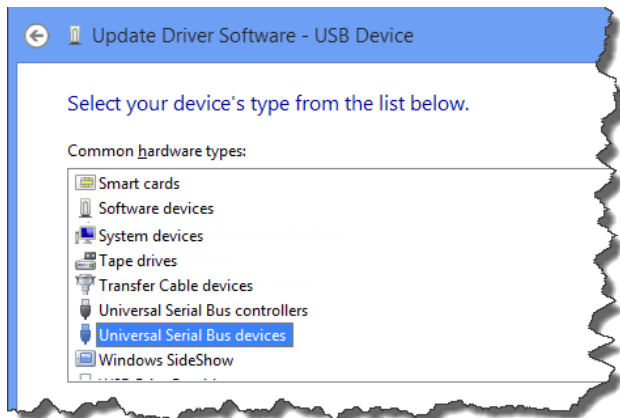
ID	Description
PRSII-227	On Windows 8 platform, AutoRAE 2's controller driver is not automatically installed.
<b>Workaround</b>	

Follow these steps to manually install the driver:

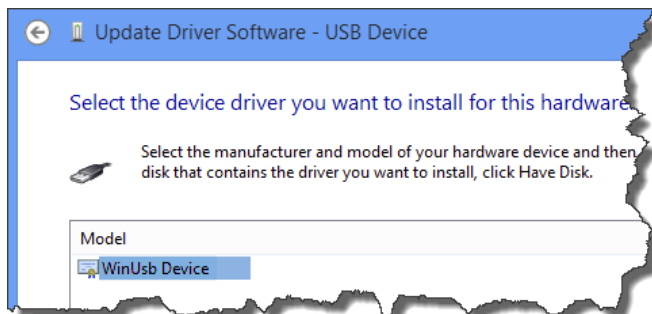
1. Connect the AutoRAE 2 Controller with a PC and turn on the instrument.
2. Open the “Device Manager” window on the PC and double-click “USB Device.”



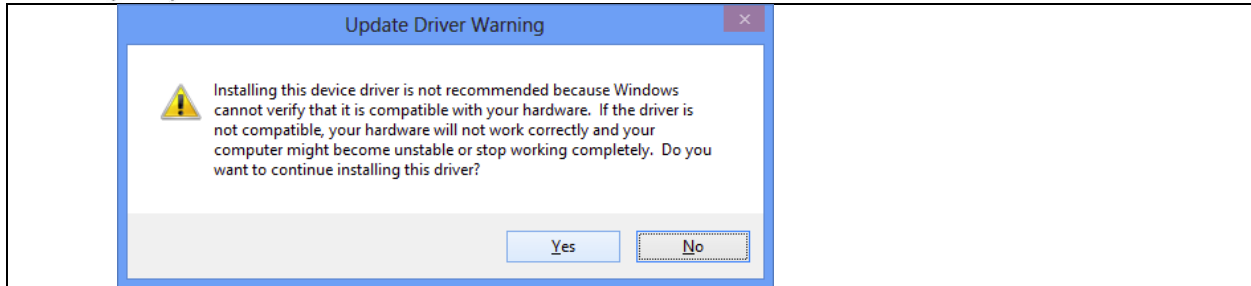
3. In the USB Device Properties dialog box, click “Update Driver.”
4. In the “Update Driver Software – USB Device” dialog box, click “Let me pick from a list of device drivers on my computer.”
5. On the next screen, select “Universal Serial Bus devices” and click “Next.”



6. On the next screen, select “WinUsb Device” and click “Next.”



7. In the “Update Driver Warning” dialog box, select “Yes.”



8. Click “Close” on the next screen.

The driver is now successfully installed. ProRAE Studio II will display the device location as “WinUSB Device(…)” when you select the “Auto Detect” option.

PRSII-228	Can't open ProRAE Studio II file for MiniRAE Lite (ATEX).
-----------	---

**Workaround**

Open it with ProRAE Studio II V1.6.0.

## ProRAE Studio II v1.6.0

### What's New

This release contains the following enhancements:

1. Print function support.
2. Support for “Gamma Only” and “Gas Only” mode for new MultiRAE-family instruments.
3. Enable/Disable P2P and Datalog features by special tool script.

### Issues Fixed

ID	Description
PRSII-177	Fails to communicate with the instrument when trying to upload Configuration Files while upgrading firmware.
PRSII-178	Discrepancies in instrument times in the datalog and graph.